

# Kāmbā

AFRICAN  
RAINFOREST  
EXPERIENCES

## Gorilla Tracking Fact Sheet



---

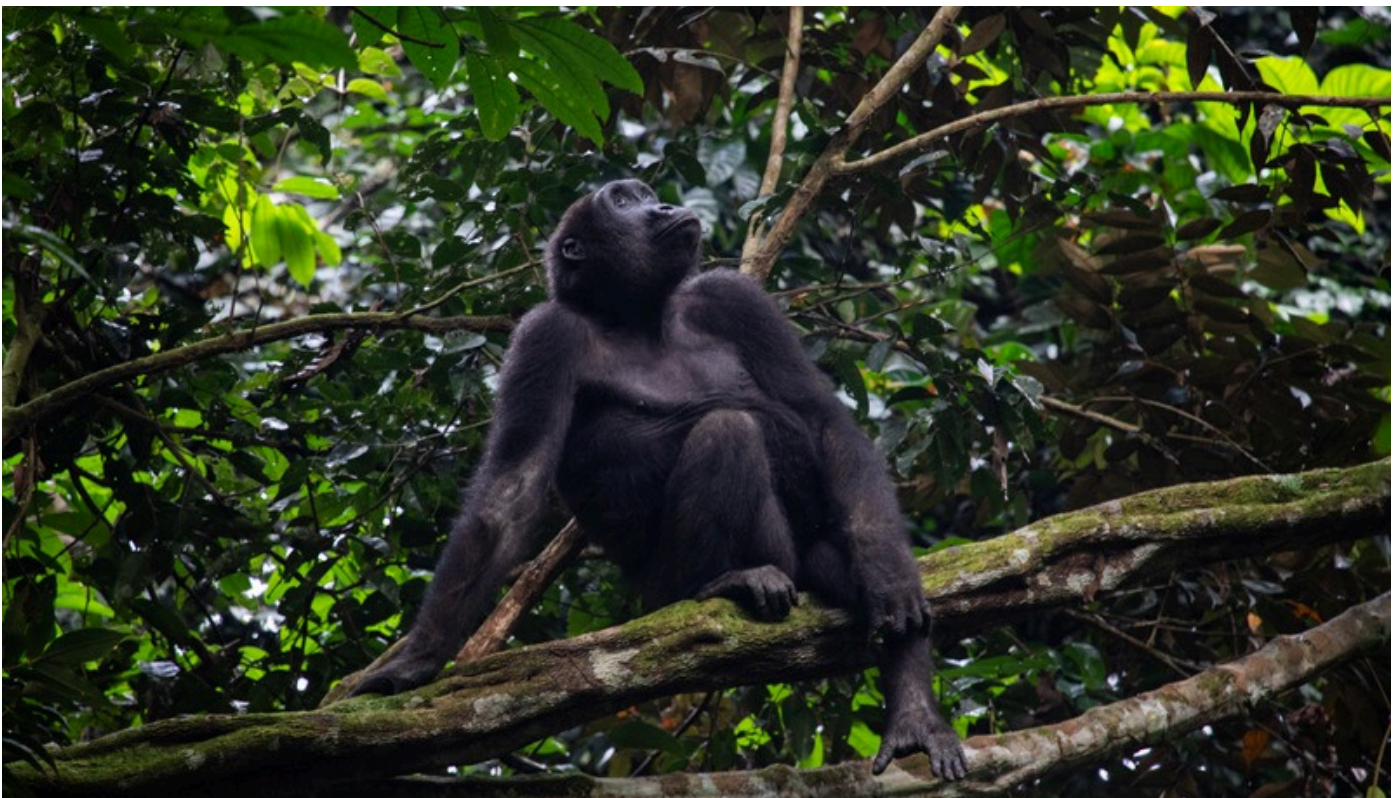
The forests in and around Odzala-Kokoua National Park are home to thousands of critically endangered Western Lowland Gorilla. These primates are slightly smaller in size than their more familiar mountain cousins, and have shorter fur and a higher fruit consumption in their diet (which means more energy to climb trees and be highly active).

Numerous groups of gorillas live in the Ndzéhi Private Concession surrounding Ngaga Lodge, of which four families have been habituated and three can be observed by guests. Each group is known by the silverback who sits at the head of the family, whimsically named after celestial beings.

Kamba's gorilla tracking experiences are rooted in research and conservation and are designed to minimize their potential impact. We practice observation, not engagement, and connect with the gorilla families in a respectful, authentic, and personal way.

Ngaga Lodge is set in the heart of the Ndzéhi Private Concession, a pristine forest bordering Odzala-Kokoua National Park in the Republic of Congo. This concession holds one of the highest known concentrations of western lowland gorillas on Earth – with more gorillas per square kilometer than anywhere else in the world, an estimated 600+ individuals call it home. Four gorilla groups have been habituated here under the guidance of a dedicated research team founded by renowned primatologist Dr. Magdalena Bermejo, who has studied their behavior for decades.

Reaching Ngaga is part of the adventure, a 2.5-3hr drive from our private airstrip at Mboko, along dirt roads that wind through savanna and rainforest landscapes, passing the traditional village of Mbomo on the way.



# What To Know About Gorilla Tracking At Ngaga Lodge



Tracking western lowland gorillas at Ngaga offers an experience unlike anywhere else on Earth. The lowland terrain makes the forest more accessible than the steep volcanic slopes of Rwanda or Uganda, while the gorillas themselves are usually quite active – climbing trees and swinging from vines with ease.

Uniquely, the home ranges of Ngaga’s habituated gorilla groups overlap at the lodge itself, meaning encounters can begin right on our doorstep. This rare combination of intimacy, accessibility, and authenticity is why we call it gorilla “tracking,” not trekking.

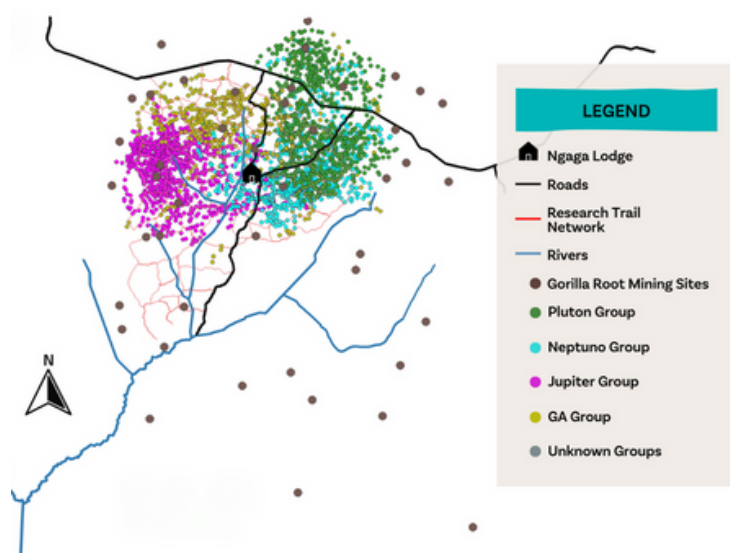
Upon arrival, guests gather around the fire for an evening gorilla track briefing, before setting off early the next morning directly from the lodge into the forest. Gorilla tracks at Ngaga Lodge are on foot and typically start before dawn. Expeditions range in length from 1-8km (0.5-5mi) over undulating terrain and often through thick undergrowth. Tracks can last between two and seven hours, including the time (one hour maximum) spent with gorillas.

Your tracker and guide will use hand signals to communicate while in close proximity to the gorilla families. Guests are asked to remain silent until the tracker and guide advise it is safe to be vocal. Camera equipment and personal belongings must be easily accessible during the trek to reduce noise.

Guests remain at least 10m (32ft) from the gorillas at all times to preserve their natural behaviors, protect them against disease, and create a boundary of mutual respect.

We require a medical clearance form completed by a health professional prior to your arrival. This is to prevent transmission of harmful diseases to which the gorilla families are susceptible. Guests must wear masks (provided) when in proximity to the gorillas. For safety and conservation reasons, gorilla tracking is limited to guests aged 15 and above.

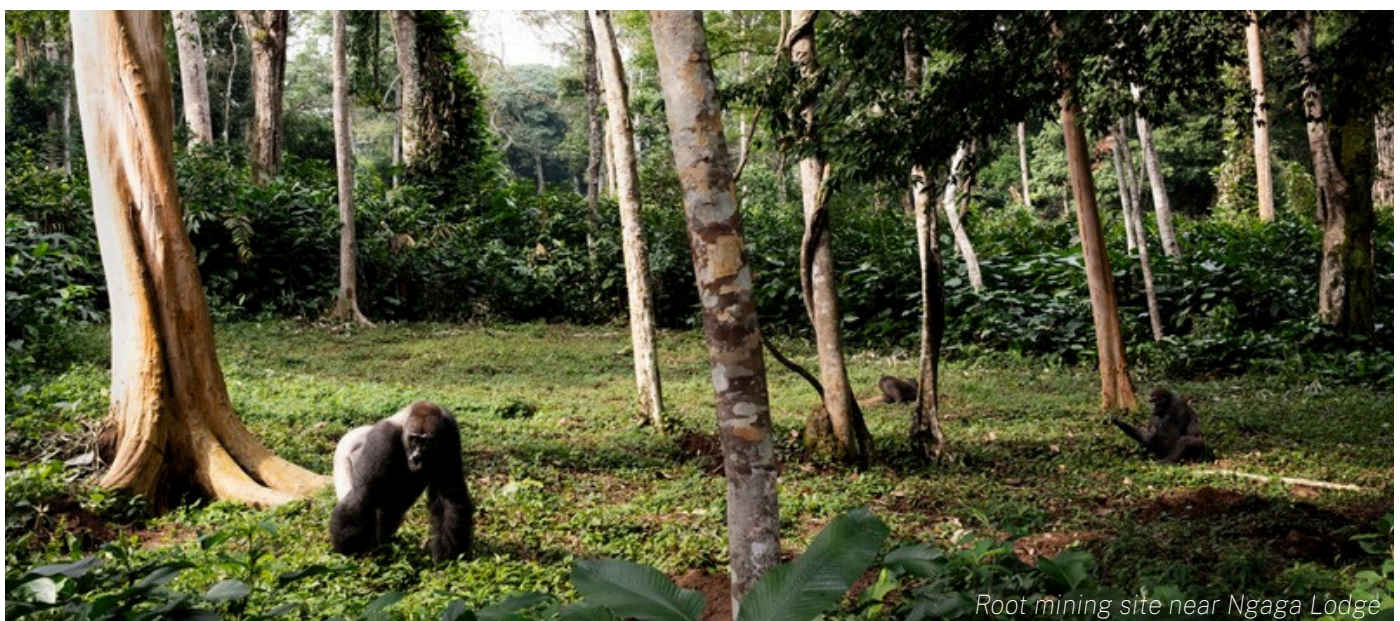
## Home Ranges of the Habituated Gorilla Groups



# Comparing Destinations

## REPUBLIC OF CONGO VS. UGANDA & RWANDA

|                           | Republic of the Congo<br>(Ngaga, Ndzéhi Private Concession)                              | Rwanda<br>(Volcanoes NP)  | Uganda<br>(Bwindi NP)   |
|---------------------------|--|---|---|
| <b>Area</b>               | ± 30 km <sup>2</sup><br>Lowland rainforest<br>(500m)                                     | ± 160 km <sup>2</sup><br>High altitude<br>(2500-4500m)  | ± 320 km <sup>2</sup><br>High altitude<br>(3000-4300m)  |
| <b># of Annual Guests</b> | ± 350  | ± 45,000  | ± 36,000  |
| <b># of Gorillas</b>      | ± 600<br>Western Lowland Gorillas  | ± 380<br>Mountain Gorillas  | ± 450<br>Mountain Gorillas  |
| <b># of Permits</b>       | Only 12 permits<br>issued per day<br>(Exclusive to Kamba guests)                         | 96 permits<br>issued per day  | 200 permits<br>issued per day   |
| <b>Group Size</b>         | Max 4 guests per group,<br>3 groups per day.   | 8 guests per group,<br>12 groups per day.   | 8 guests per group,<br>20 groups per day.   |
| <b>Cost of Permit</b>     | US \$750 per permit per<br>day. At least 2 permits<br>included in each<br>Kamba Journey. | US \$1,500 per permit per<br>day. Permit availability is<br>not guaranteed. Advised<br>to book at least a year<br>in advance. | US \$800 per permit per<br>day. Permit availability<br>is not guaranteed.<br>Advised to book at<br>least a year in advance. |



# Comparing Gorilla Species

## WESTERN LOWLAND GORILLA

*Gorilla gorilla gorilla*

## MOUNTAIN GORILLA

*Gorilla beringei beringei*



### Physical Traits

**Upright standing height:**  
up to 1.7m (5.5 ft)  
**Weight:** up to 182kg (401 lbs)  
Shorter, softer fur.

**Upright standing height:**  
up to 1.9m (6.2 ft)  
**Weight:** up to 195kg (430 lbs)  
Thicker, shaggier fur.

### Habitat

Tropical lowland forest areas; prefer a more heavily forested, flatter habitat.

Rocky slopes of dormant volcanoes and in cloud forests. Can only survive in high altitudes.

### Diet

Diverse diet of fruits, seeds, leaves, and stems; known to dig for roots and eat seasonal fruits.

Primarily leaves, shoots, and stems, with less fruit available at high altitudes.

### Behavior

More active and arboreal, often climbing trees and swinging from vines. Through limited exposure to humans, they retain their wild, natural behaviors

Largely terrestrial, mountain gorillas live and feed on the forest floor. Decades of tourism have made them more habituated.

### Distribution

**Republic of Congo,** Cameroon, Central African Republic, and Gabon

Rwanda, Uganda, and the DRC

### Estimated Numbers

Between 150,000 - 350,000 in the Congo Basin. Estimates of  $\pm$  25,000 in Northwest Republic of Congo. SOURCE

The global total mountain gorilla population is estimated at 1,063 individuals. SOURCE

### Conservation Status

**Critically Endangered:** Population has declined by more than 60% over the last 20-25 years due to poaching and disease.

**Endangered:** Population has increased in numbers in recent years due to conservation efforts.

If you have any further questions,  
please visit our comprehensive  
[FAQ PAGE](#), or just reach out at  
[info@kambaafrica.com](mailto:info@kambaafrica.com).

